



EASY TECH  **app**

5150
USER MANUAL



THE POWER TO MOVE

NEW SERIES 50

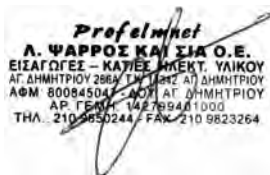
Series 50 is a complete series of PROFELMNET control boards, with integrated Bluetooth technology. Compatible with Profelmnet Easy Tech application that is available in IOS and Android. The installer is able to access and adjust all the functions of the control board through the smartphone, tablet or laptop.

The models of series 50 are :

- 5033 control board for sliding and swing gate, roller shutter, barrier 230VAC
- 5050 control board for sliding and swing gate, barrier, pergolas 24VDC
- 5114 control board for double motors 230VAC
- 5150 control board for double motors 24VDC

CE Declaration of Conformity

The manufacturer **L. PSARROS & SIA OE** declares that the products **5050, 5033, 5114, 5150** are according to European Directives requirements of **RADIO EQUIPMENT DIRECTIVE (RED) 2014/53/EU** and **ELECTROMAGNETIC COMPATIBILITY EMC 2004/108/EC**

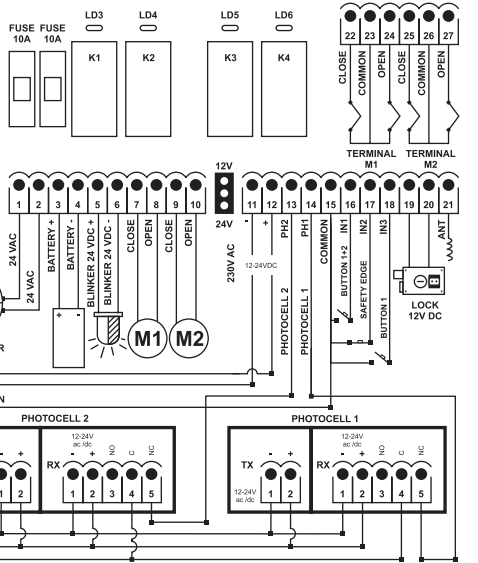
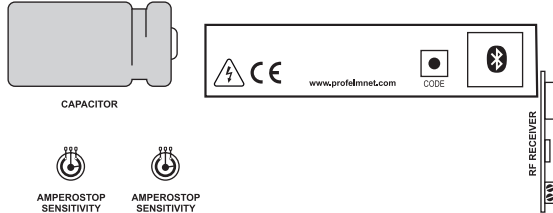


Labros Psarros
Electronics Engineer
Technical Director

Warning for the installer

1. **ATTENTION!** To ensure the safety of people, it is important that you read all the following instructions. Incorrect installation or incorrect use of the product could cause serious harm to people
2. Carefully read the instructions before beginning to install the product
3. This product was designed and built strictly for the use indicated in this documentation Any other use, not expressly indicated here, could compromise the good condition/operation of the product and/or be a source of danger
4. Store these instructions for future reference
5. Before attempting any job on the system, cut out electrical power
6. Make sure that a differential switch with threshold of 0.03 A is fitted upstream of the system
7. Do not in any way modify the components of the automated system
8. Do not allow children or adults to stay near the product while it is operating
9. Keep remote controls or other pulse generators away from children, to prevent the automated system from being activated involuntarily
10. The user must not attempt any kind of repair or direct action whatever and contact qualified personnel only
11. Profelmnet as a manufacturer reserves the right to make changes to the product without notice
12. Anything not expressly specified in these instructions is not permitted

5150 Control board for double motors 24VDC



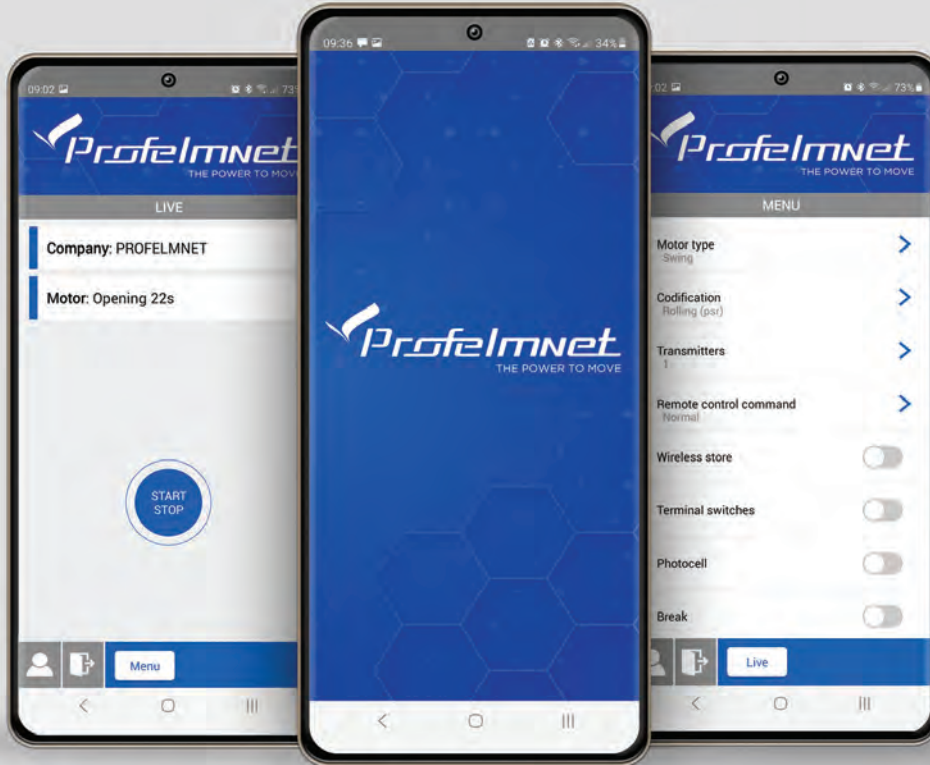
TECHNICAL CHARACTERISTICS

Power supply	24 VAC
Max. Motor power	400W in total
Box dimensions	25cm X 19.5cm X 10cm
Control board dimensions	13cm X 13.5cm X 4.5cm
Fuse 24VAC	10A
Fuse battery	10A
Fuse 12-24VDC	500mA
Blinker light power supply	24VDC
Photocell power supply	Lock 12 or 24VDC (jumper)
power supply	12VDC
Fuse Lock	1A
Battery Type	2 X 12V /6Ahr in series
Transformer type	Toroidal 20-24VAC/130VA
Remotes memory	Removable memory up to 300 remotes
Temperature	-20°C + 60°C

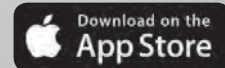
ELECTRICAL CONNECTIONS

1	+ 20 VAC	15	Common accessories
2	- 20 VAC	16+15	Button 1+2 - N.O
3	Battery +	17+15	Safety edge - N.C
4	Battery -	18+15	Button motor 1 - N.O
5	Blinker 24 VDC +	19+20	Lock 12VDC 5Watt
6	Blinker 24 VDC -	21	Antenna
7	Motor 1 Close	22+23	Close terminal switch motor 1-N.C
8	Motor 1 Open	23	Common terminal switch motor 1
9	Motor 2 Close	24+23	Open terminal switch motor 1-N.C
10	Motor 2 Open	25+26	Close terminal switch motor 2-N.C
11+12	Power supply 12-24VDC	26	Common terminal switch motor 2
13+15	Photocell 2	27+26	Open terminal switch motor 2-N.C
14+15	Photocell 1		

ACTIVATE INTERNET AND BLUETOOTH  OF YOUR DEVICE
DOWNLOAD THE PROFELMNET EASY TECH APPLICATION

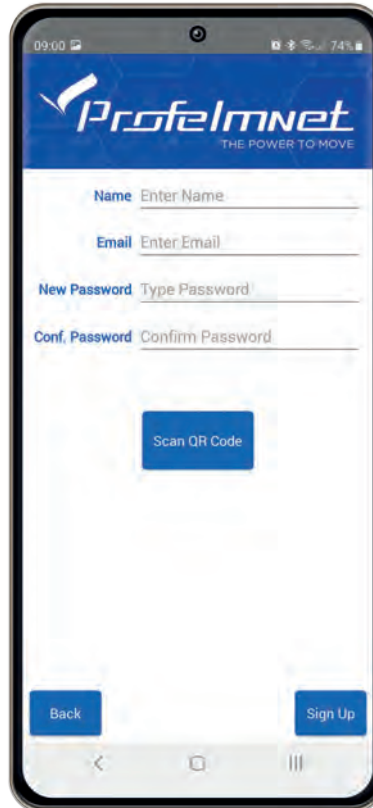
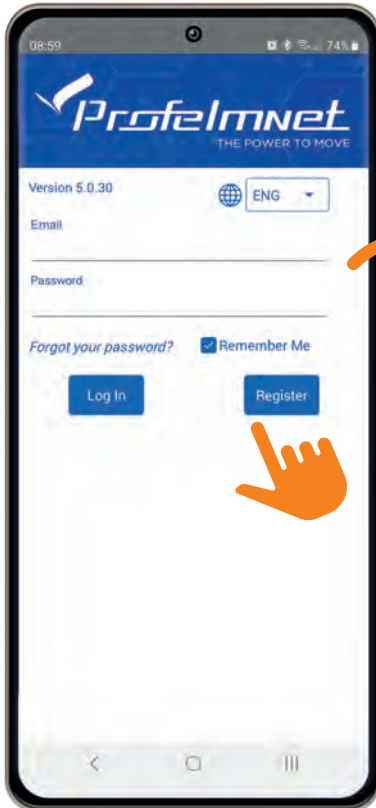


ProfelmNet
Easy Tech

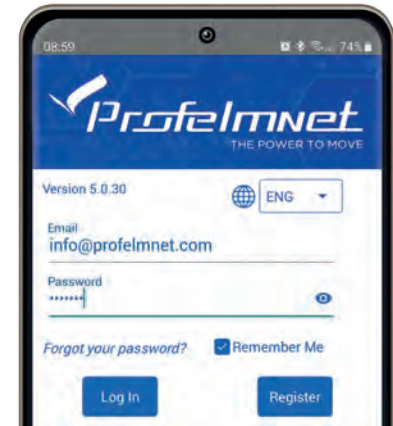


REGISTER

FOLLOW THE STEPS TO REGISTER



- 1 Choose the language
- 2 Press Register & fill in your personal data
- 3 Scan QR code. Find the QR code on the board & scan it
- 4 Press sign up to finish



CONNECTION with the board

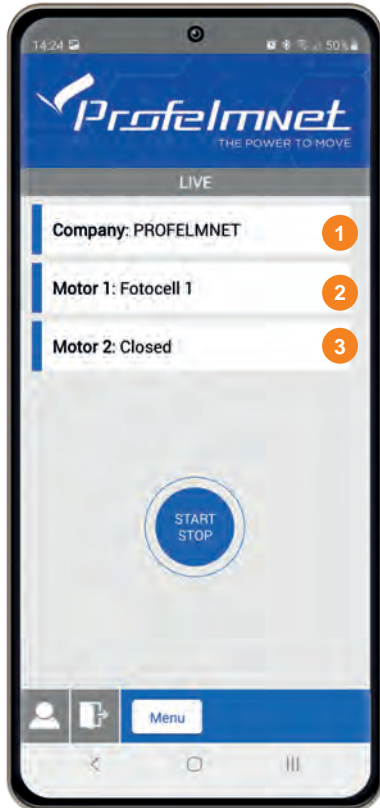


- 1 Press scan to find the PROFELMNET device
- 2 Choose the PROFELMNET device
- 3 Type the 6 Digit PIN

During the first connection, type OOOOOO PIN and then type your personal 6-digit PIN.

i The PIN code is your personal security number. Without this PIN code, you can not access the board. Avoid using simple easy PIN codes (i.e 111111)

LIVE SCREEN

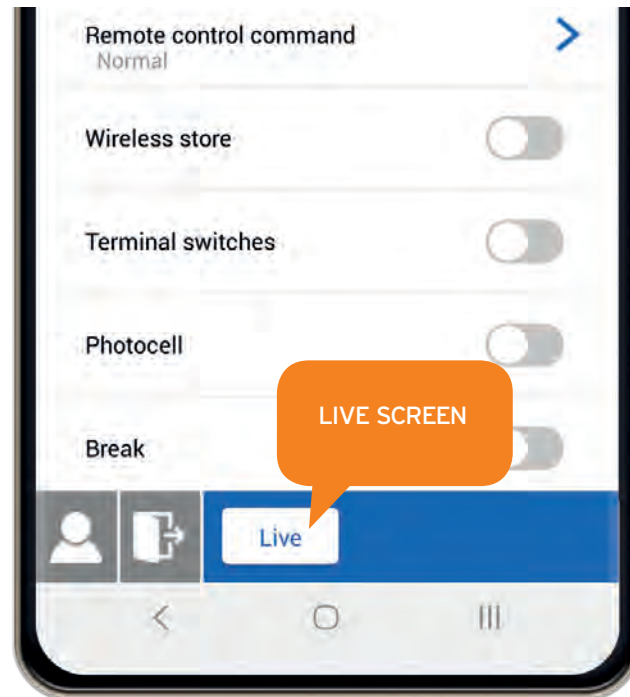
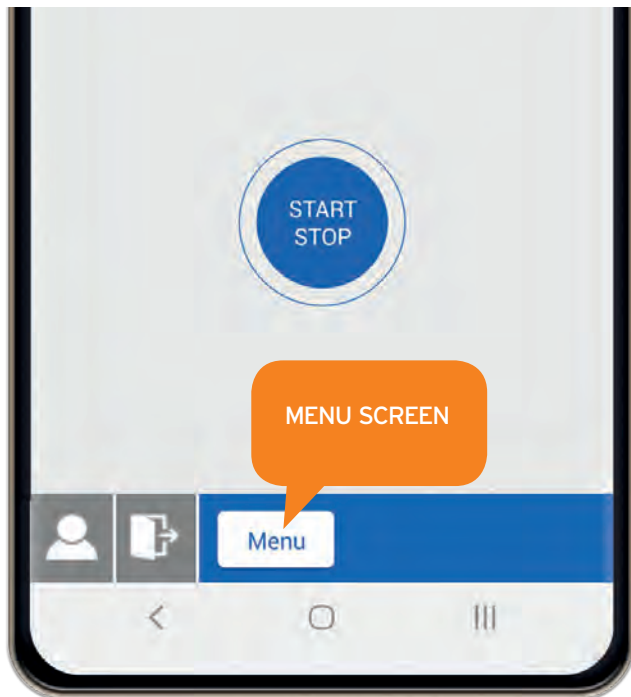


- 1 Company: Board Supplier
- 2 Motor 1: Installation Info
- 3 Motor 2: Installation Info

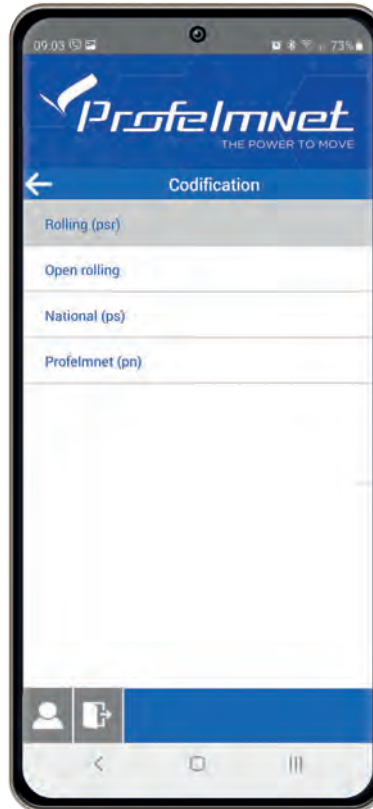
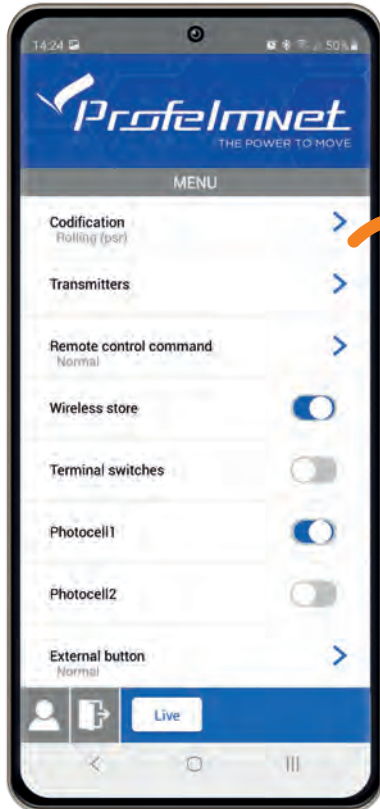


USER PROFILE:
Edit your personal data

SWITCH LIVE SCREEN TO MENU SCREEN

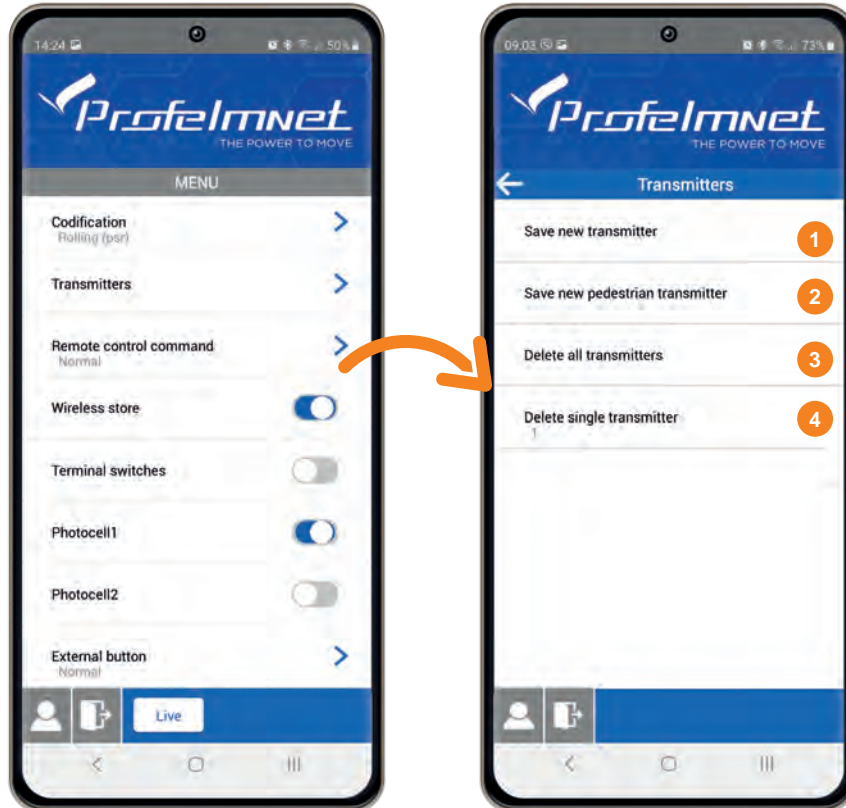


MENU: Codification



Codification: Select based on the installation's transmitters

MENU: Transmitters



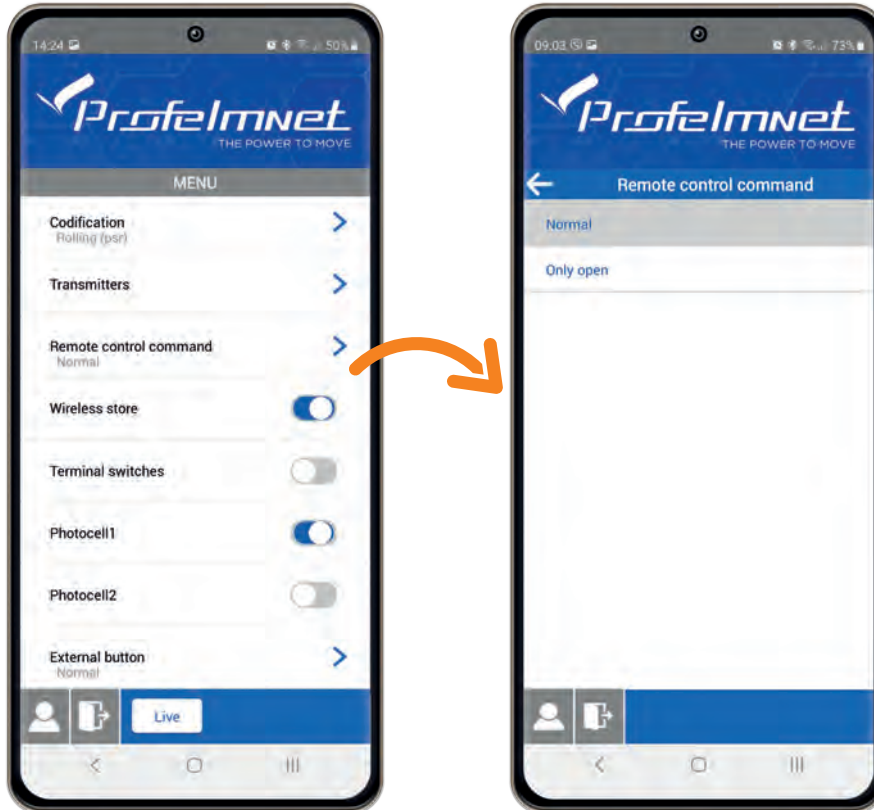
- 1 Save new transmitter:**
Press the transmitter button you want to save
- 2 Save new pedestrian transmitter:**
Press the transmitter button you want to save as pedestrian
- 3 Delete all transmitters:**
YES/NO
- 4 Delete single transmitter:**
Choose the number of transmitter to DELETE.



USER NUMBER:

The number displayed on the main screen of the application, LIVE screen, every time each remote control is activated.

MENU: Remote control Command

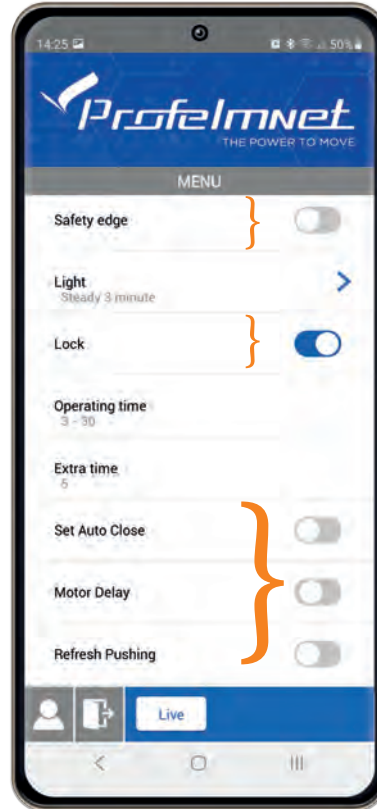
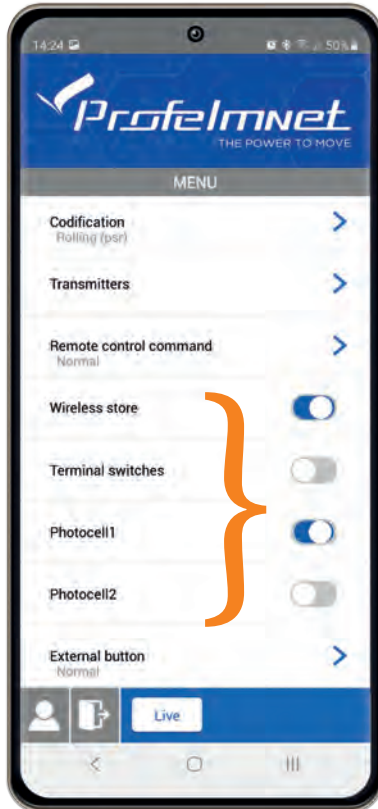


Remote control command

Normal:
START-STOP-CLOSE

Only Open

MENU: Settings ON/OFF



- Wireless store
- Terminal switches
- Photocell 1
- Photocell 2
- Safety edge
- Lock
- Motor delay
- Recurring closing

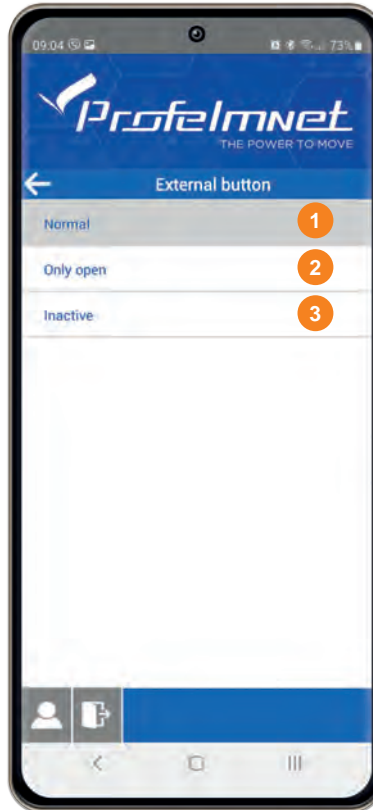
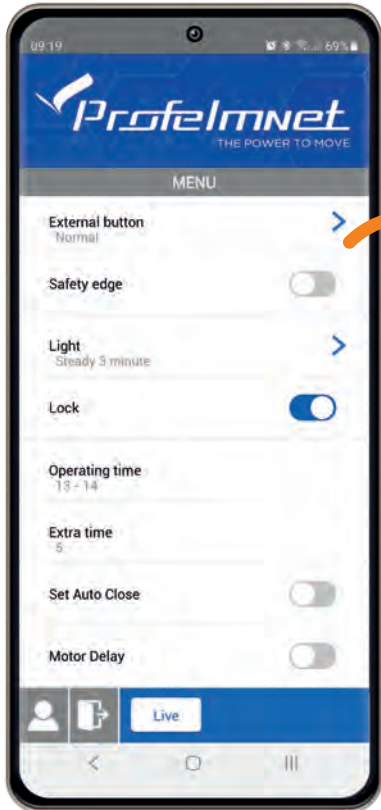
OFF ON



ADD NEW TRANSMITTERS WIRELESSLY:

The motor is fully closed or open. Press a working transmitter button (already in memory) to start the motor working and hold it pressed until the motor stops. When it stops, leave it and press the new transmitter button immediately. The new transmitter is saved. Repeat steps to program more transmitters remotely. When the memory is full (300 transmitters) you cannot add more new transmitters.

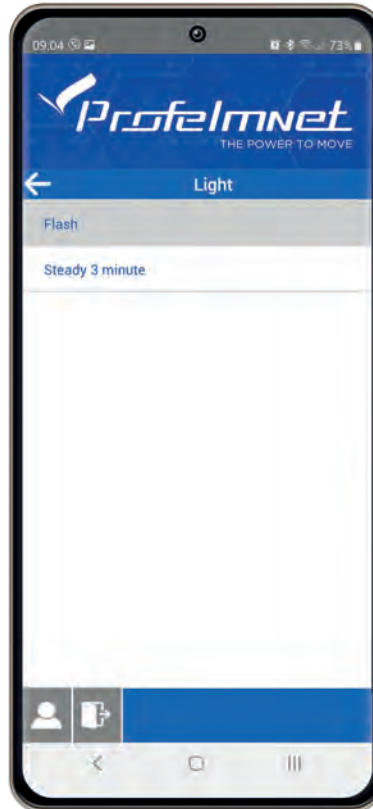
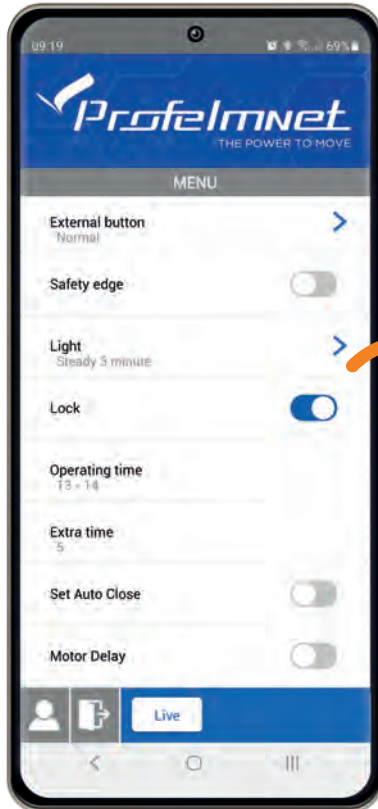
MENU: External Button



External Button: Select based on the installation

- 1 NORMAL
- 2 ONLY OPEN
- 3 INACTIVE

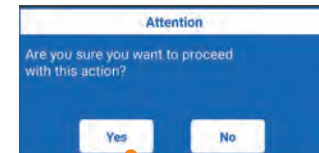
MENU: Flash



FLASH: The light is flashing during the cycle of the motor.

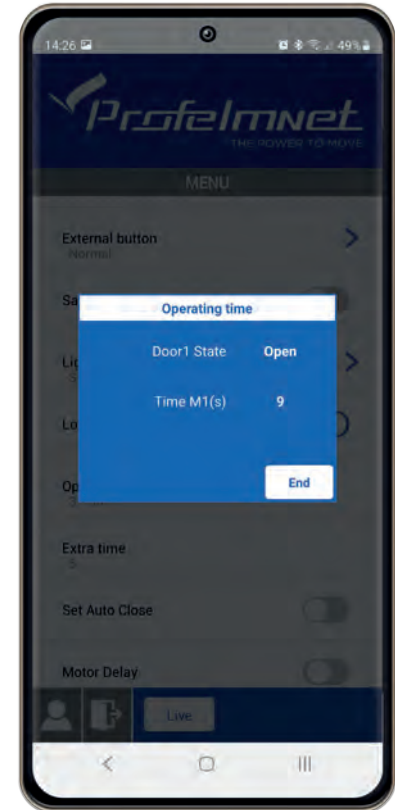
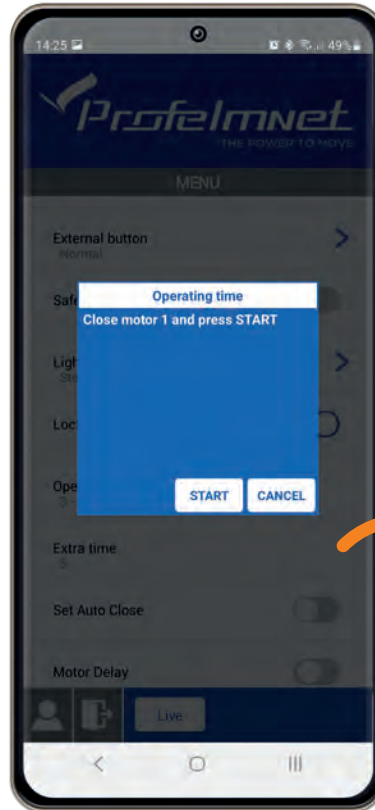
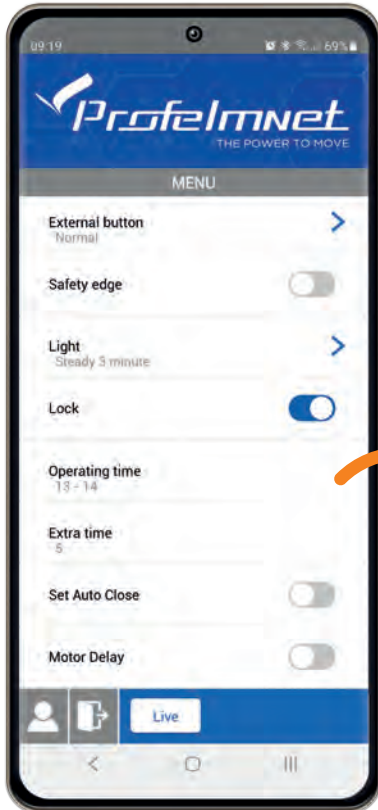
LIGHT STEADY 3 MINUTES: The light is steady for 3 minutes after the last command.

SELECTION CONFIRMATION

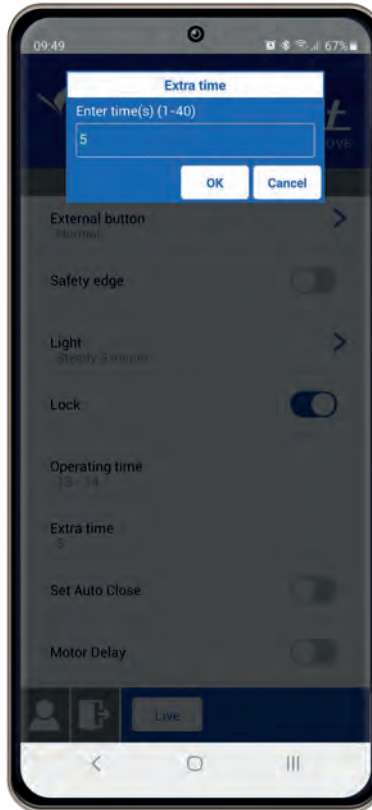
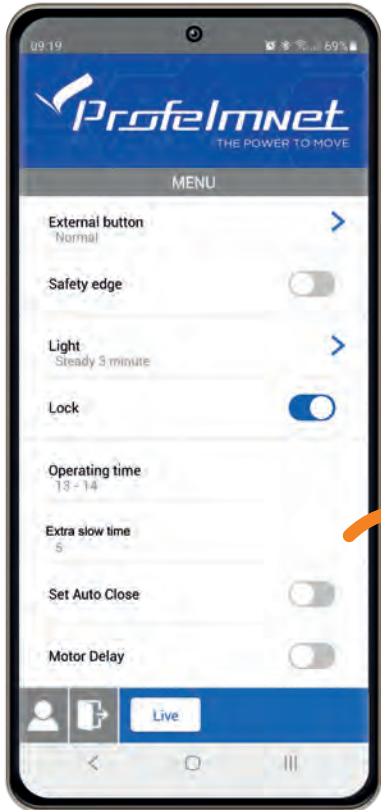


MENU: Operating time - motor 1 & motor 2

Follow the application steps

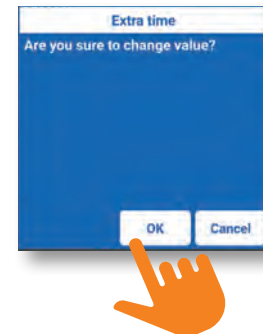


MENU: Deceleration time

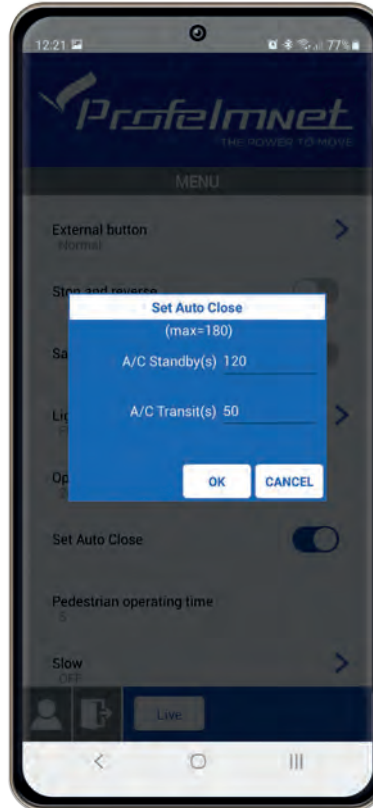
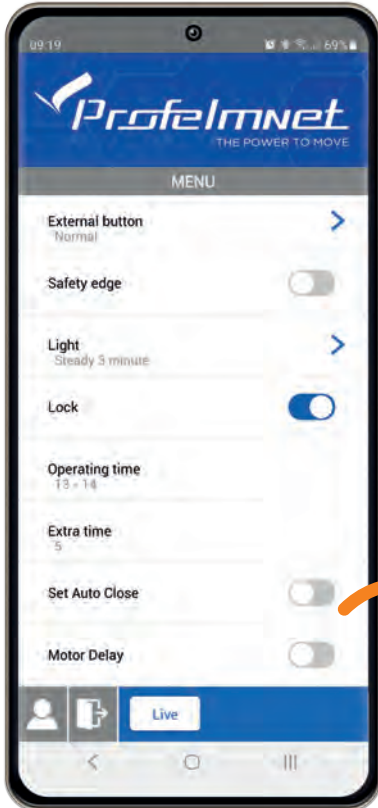


Deceleration time:
Select based on the installation

SELECTION CONFIRMATION



MENU: Set auto - close



- **Auto-Close Stand-by:**
The time when the gate is open and the photocell is not activated
- **Auto close Transit:**
The time when gate is open after the photocell is activated



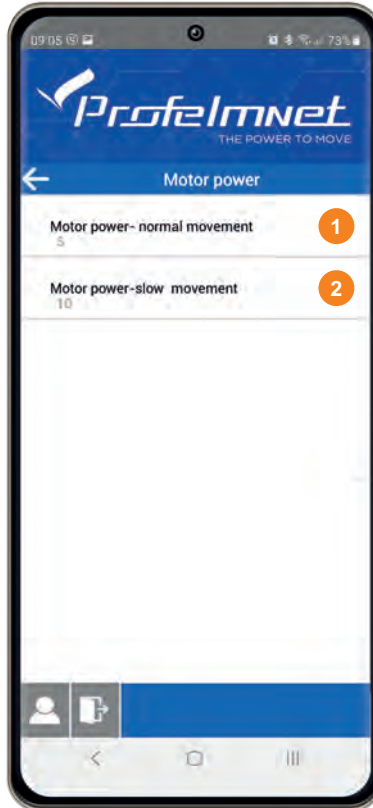
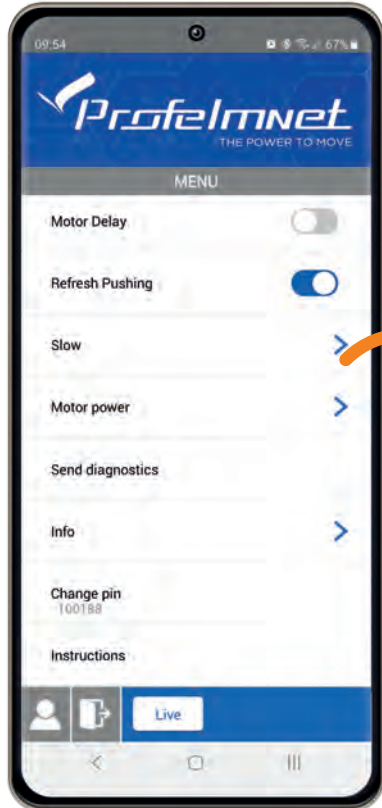
SET TIME:

Set time on each field in seconds

If you want to edit the time, you need to disable the AUTO-CLOSE and re enable it

OFF ON

MENU: Motor Power



- 1 Motor power - normal movement:
Enter value
- 2 Motor power - slow movement:
Enter value

ENTER VALUE:

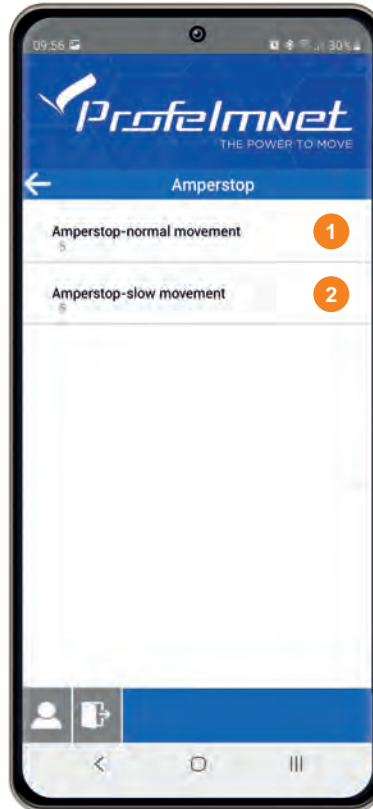
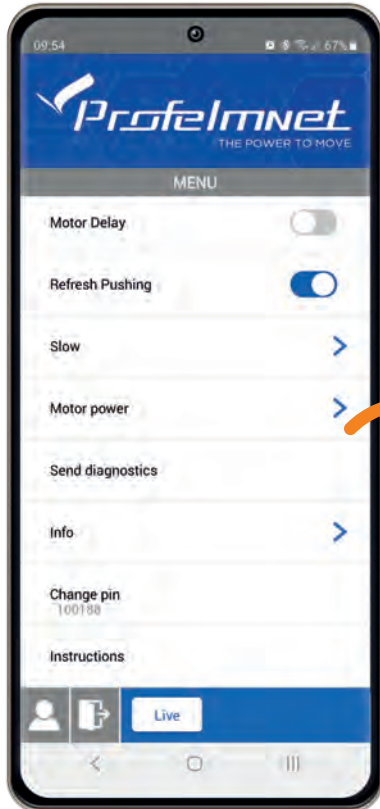
Motor power- normal movement

Enter value (1-10)

5

OK Cancel

MENU: Amperstop

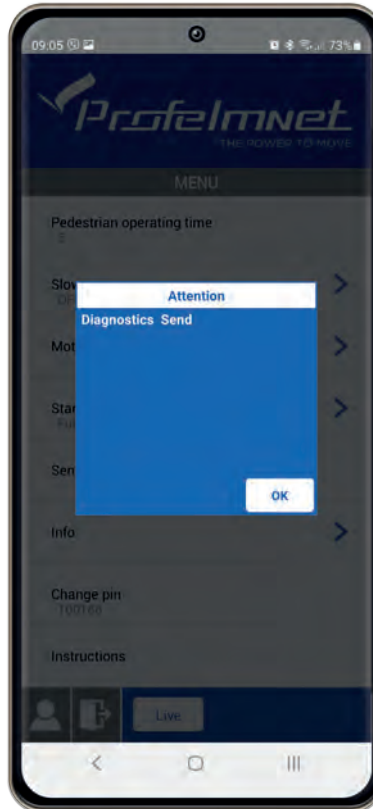
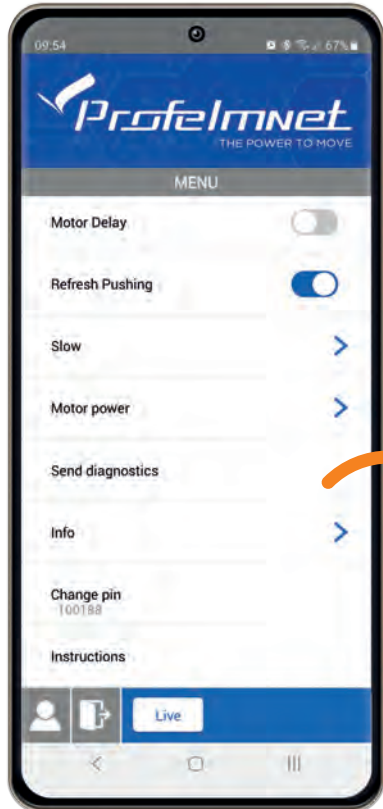


- 1 Amperstop in normal movement
- 2 Amperstop in slow movement

ENTER VALUE

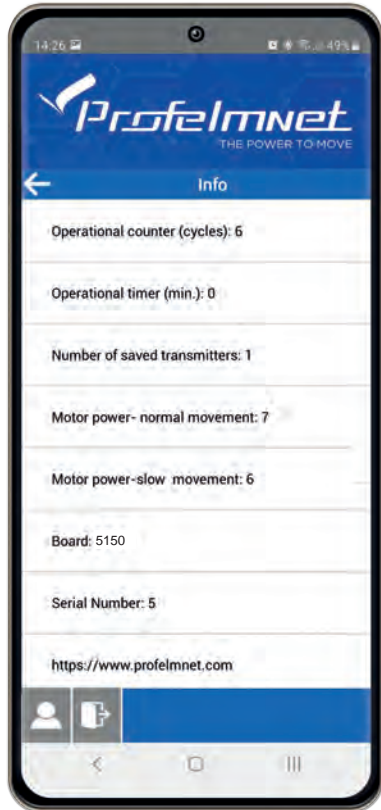
A dialog box titled 'Amperstop-normal movement' with the prompt 'Enter sensitivity (1-10)'. The input field contains the number '5'. There are 'OK' and 'Cancel' buttons at the bottom. An orange hand icon is pointing at the 'OK' button.

MENU: Send Diagnostics



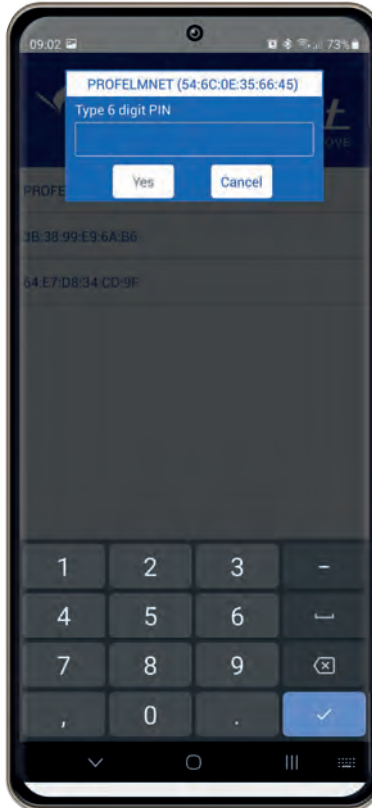
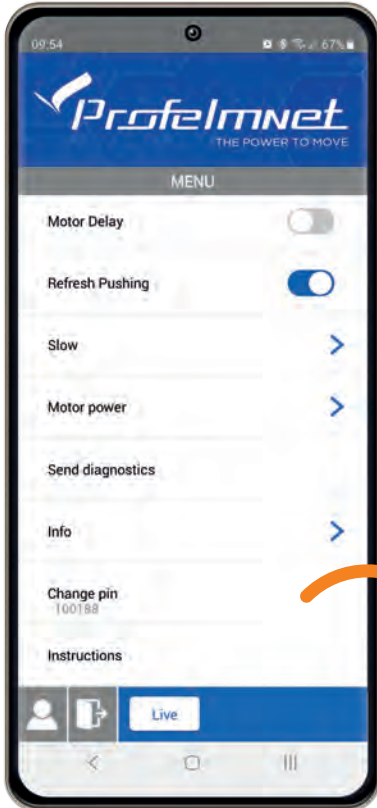
In case of technical support, send diagnostics to the Profelment technician

MENU: Info

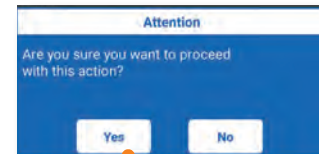


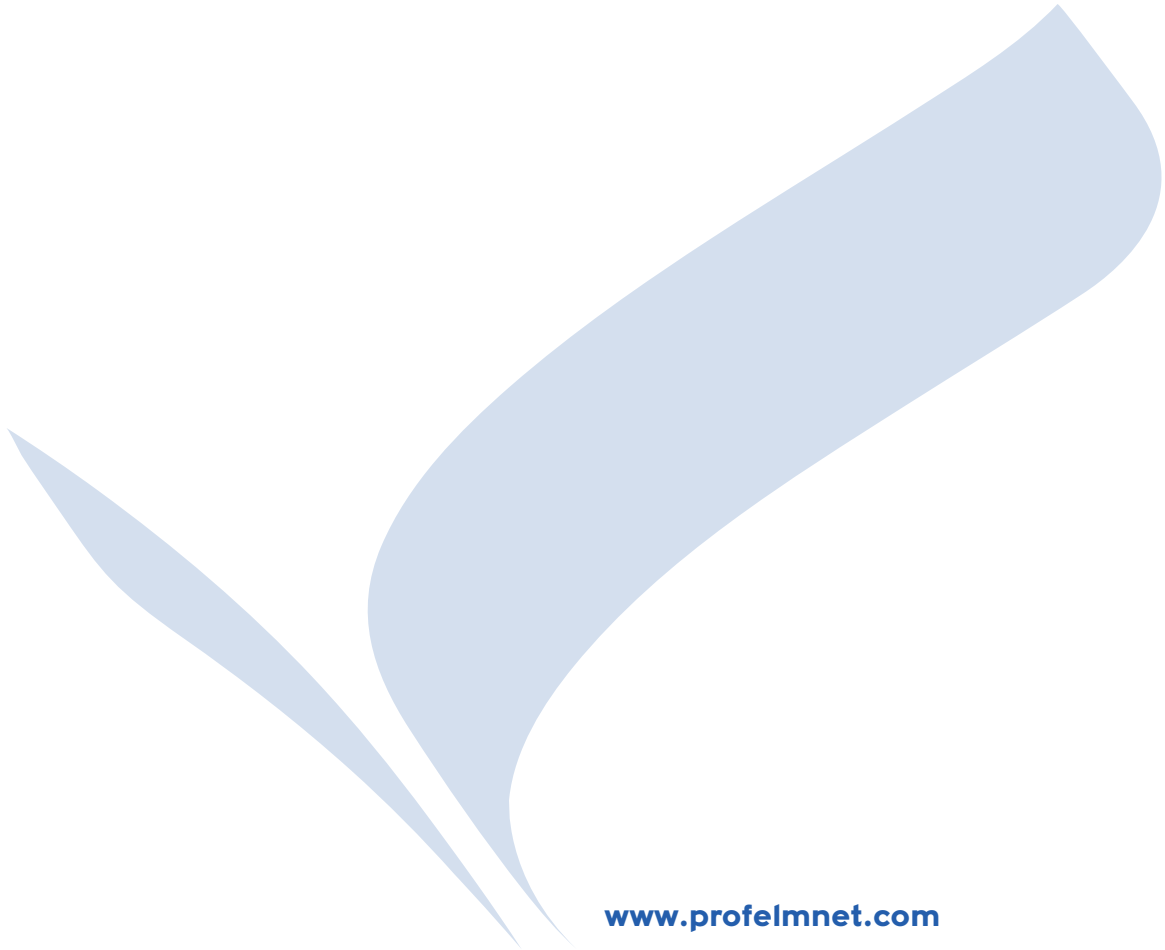
All information of the board

MENU: Change PIN



SELECTION CONFIRMATION





www.profelmnet.com